

SPECIAL "T" INK

RECEIVED AND DEPOSITED  
 NOV. 1, 1985  
 DATE: *Nov 1, 1985*  
 M. PETER ALLEN, O.L.S.  
 AND REGISTRAR FOR THE REGISTRY DIVISION OF FRONTENAC (N° 13)  
*Shuttle*

CAUTION: THIS PLAN IS NOT A PLAN OF SUBDIVISION WITHIN THE MEANING OF THE PLANNING ACT.

PLAN SHOWING SURVEY OF PART OF LOT 7 CONCESSION 4 TOWNSHIP OF PORTLAND COUNTY OF FRONTENAC 1985 GRANGE W. ELLIOTT LTD.



METRIC SCALE 1:1500  
 DISTANCES SHOWN ON THIS PLAN ARE IN METRES AND CAN BE CONVERTED TO FEET BY DIVIDING BY 0.3048

**SURVEYOR'S CERTIFICATE:**

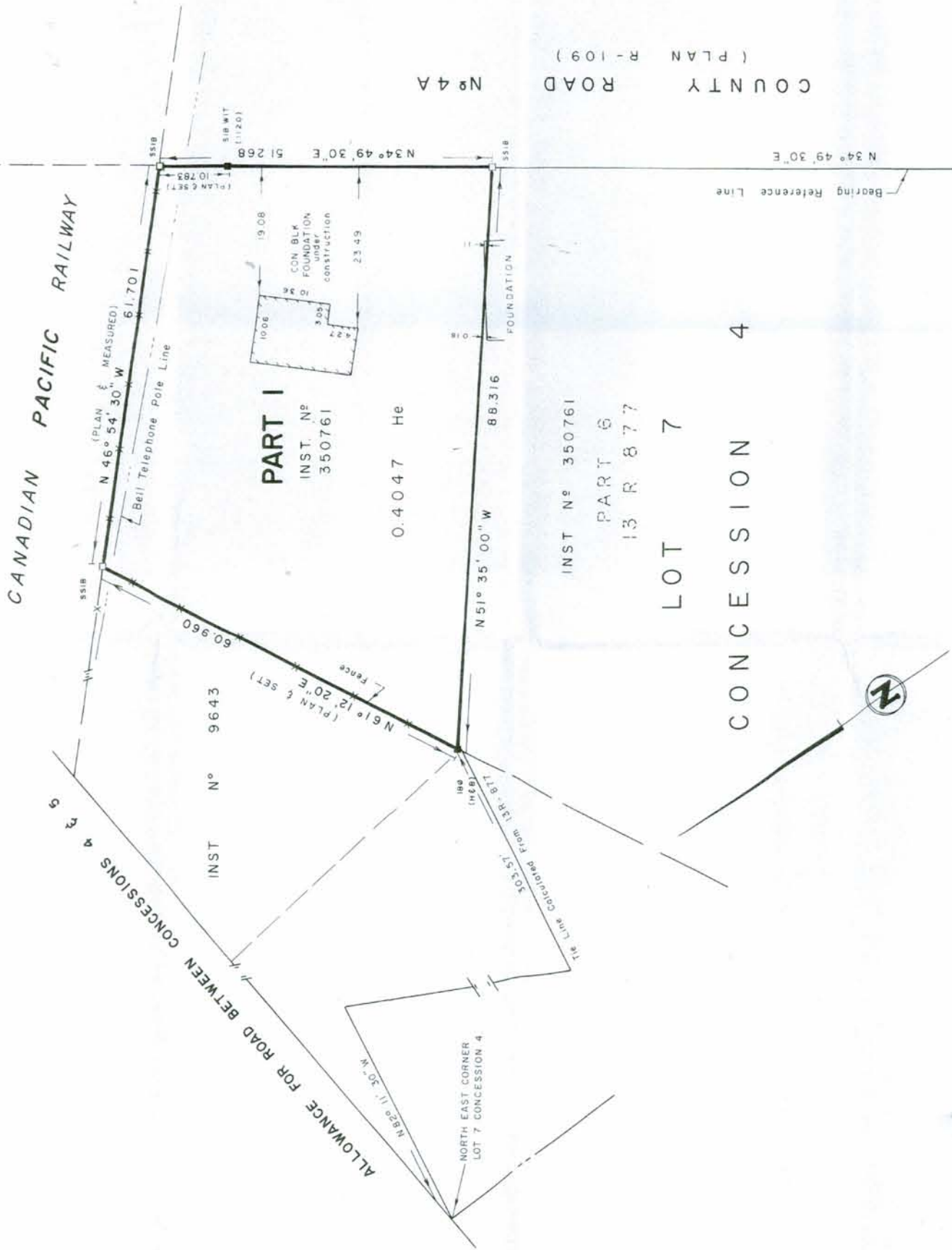
1. THIS SURVEY AND PLAN ARE CORRECT AND IN ACCORDANCE WITH THE SURVEYS ACT AND THE REGISTRY ACT AND THE REGULATIONS MADE THEREUNDER.
2. THE SURVEY WAS COMPLETED ON THE 31<sup>ST</sup> DAY OF OCTOBER, 1985

GRANGE W. ELLIOTT LTD.  
 ONTARIO LAND SURVEYORS  
 KINGSTON, ONTARIO  
 OCT. 31, 1985  
*M. Peter Allen*  
 M. PETER ALLEN  
 Ontario Land Surveyor

**NOTE AND LEGEND:**

BEARINGS ARE ASTROMOMIC DERIVED FROM THE WESTERLY LIMIT OF COUNTY ROAD N° 4A AS SHOWN ON PLAN N° R-109.

- ⊕ - DENOTES SURVEY MONUMENT PLANTED
- ⊙ - SURVEY MONUMENT FOUND
- 5518 - SHORT STANDARD IRON BAR
- 518 - STANDARD IRON BAR
- 18 - IRON BAR
- WIT. - WITNESS



GRANGE W. ELLIOTT LTD.