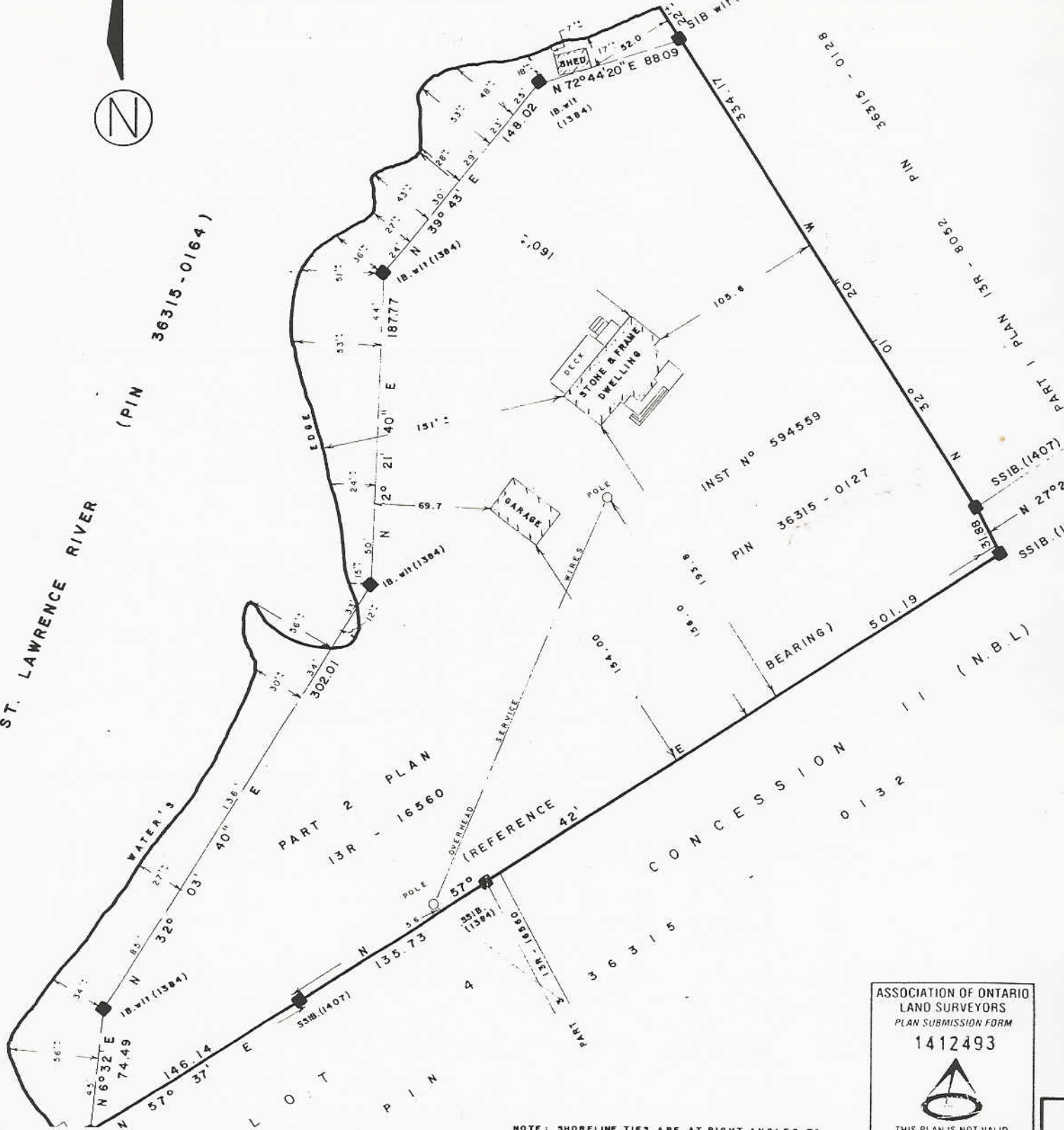




ST. LAWRENCE RIVER  
(PIN 36315-0164)



PART 2 PLAN  
13R - 16560

CONCESSION 0132  
(N.B.L.)

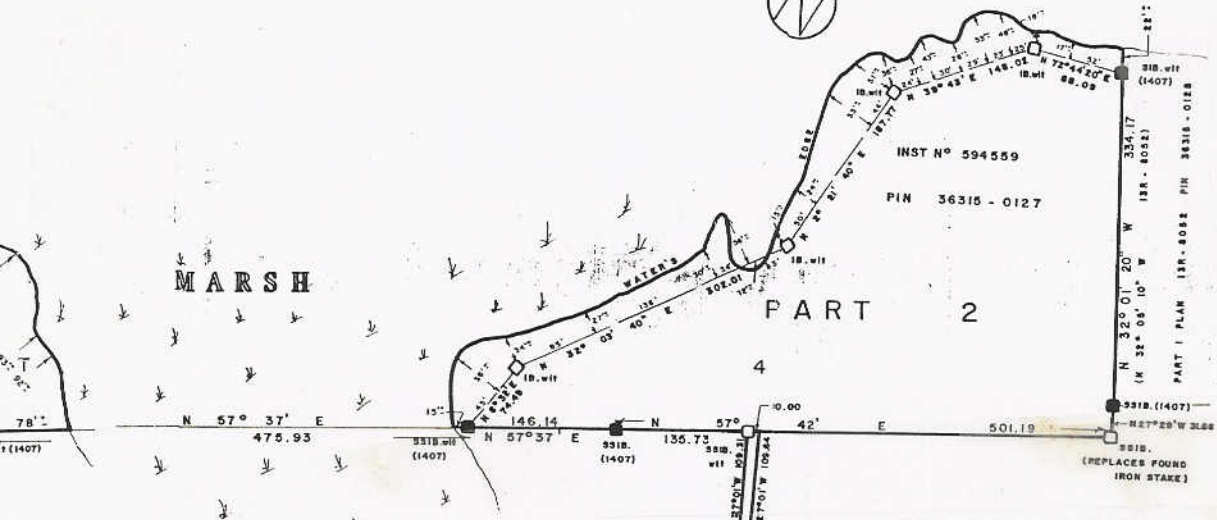
INST No 594559  
PIN 36315-0127

ASSOCIATION OF ONTARIO  
LAND SURVEYORS  
PLAN SUBMISSION FORM  
1412493

THIS PLAN IS NOT VALID

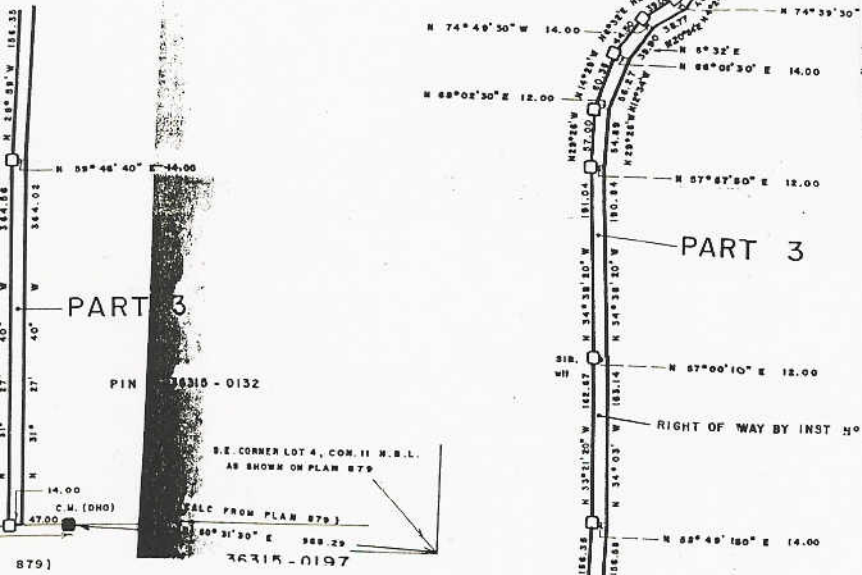
NOTE: SHORELINE TIES ARE AT RIGHT ANGLES TO

INCE RIVER PIN 36315 - 0164



S I O N

INST N° 260190



PLAN 13R- 10560

RECEIVED AND DEPOSITED July 29, 2002

*Marilyn Kohler*  
LAND REGISTRAR

REGISTRY DIVISION OF FRONTENAC N° 13

I REQUIRE THIS PLAN TO BE DEPOSITED UNDER THE REGISTRY ACT

JULY 29, 2002

*Douglas C. Daugherty*  
DOUGLAS C. DAUGHERTY

SCHEDULE

PART	LOT	CONCESSION	INST N°	PIN
1	?		594559	36315-0128
2	4	II N.B.L.	594559	36315-0127
3			260190	36315-0132

PART 1 BEING ALL OF PIN 36315 - 0128  
 PART 2 BEING ALL OF PIN 36315 - 0127  
 PART 3 BEING PART OF PIN 36315 - 0132  
 PART 3 IS SUBJECT TO A RIGHT OF WAY BY INST N° 59455