



SURVEY REPORT - PART 2

DESCRIPTION: LOTS 5 & 6, SOUTH SIDE OF GEORGE STREET, PART OF GEORGE STREET AND PART OF LOT 1, EAST SIDE OF RICHMOND STREET, REGISTERED PLAN No. 69, TOWN OF GREATER NAPANEE, COUNTY OF LENNOX & ADDINGTON, DESIGNATED AS PART 1, PLAN 29R-9495

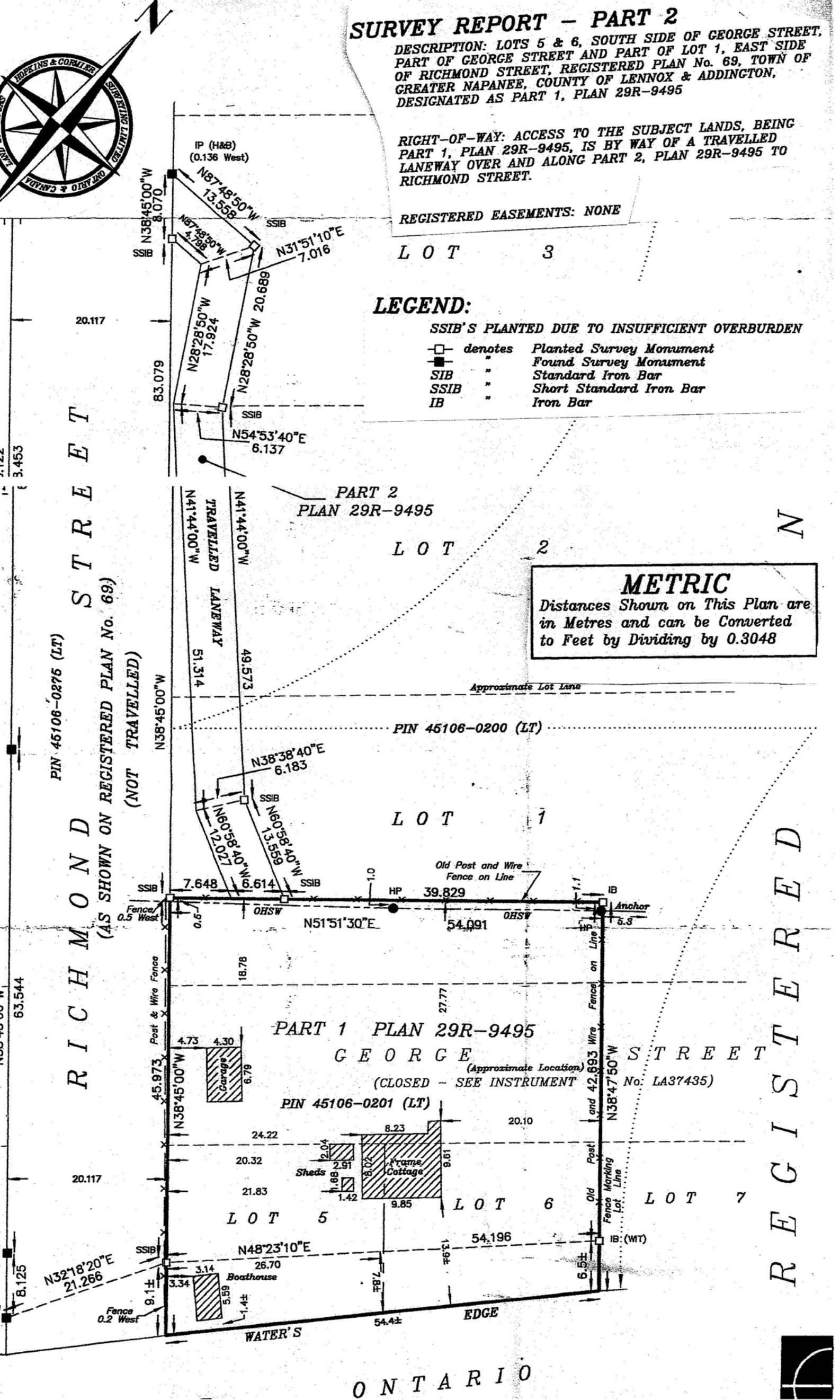
RIGHT-OF-WAY: ACCESS TO THE SUBJECT LANDS, BEING PART 1, PLAN 29R-9495, IS BY WAY OF A TRAVELLED LANEWAY OVER AND ALONG PART 2, PLAN 29R-9495 TO RICHMOND STREET.

REGISTERED EASEMENTS: NONE

LOT 3

LEGEND:

- SSIB'S PLANTED DUE TO INSUFFICIENT OVERBURDEN
- denotes Planted Survey Monument
 - " Found Survey Monument
 - SIB " Standard Iron Bar
 - SSIB " Short Standard Iron Bar
 - IB " Iron Bar



METRIC
Distances Shown on This Plan are in Metres and can be Converted to Feet by Dividing by 0.3048

REGISTERED

RICHMOND STREET

GEORGE STREET

N

PIN 45106-0275 (LT)
(AS SHOWN ON REGISTERED PLAN No. 69)
(NOT TRAVELLED)

PART 1 PLAN 29R-9495

GEORGE STREET
(Approximate Location)
(CLOSED - SEE INSTRUMENT No: LA37435)

PIN 45106-0201 (LT)

PIN 45106-0200 (LT)

PART 2
PLAN 29R-9495

WATER'S EDGE